



Case Study

Gas Station / Convenience Store / Fast Food Restaurant / Car Wash



Location:	Sheetz convenience store at Hancock, Maryland, USA
Application:	Commercial
Purpose of Installation:	<ul style="list-style-type: none"> ➤ Prevention and removal of limescale deposits ➤ Prevention and removal of biological deposits
Installation Date:	October 10, 2012
Inspection Date:	January 10, 2013 (90 day evaluation)

Installation Details

Water conditioner model	HydroFLOW 45i water conditioning device
Pipe Outer Diameter	1 inch
Pipe Material	Copper
Installation location	Incoming water supply from
Installer	Temp Press, Inc. (www.temppress.com)



Overview

Sheetz, Inc. is a chain of gas stations / convenience stores owned by the Sheetz family. Since 1952, Sheetz has grown from a small dairy / deli in Altoona, Pennsylvania, to one of the fastest growing family-owned convenience stores in the world, with more than 435 locations across six states - Pennsylvania, Maryland, Virginia, West Virginia, Ohio and North Carolina - and more than 14,500 employees.

The Sheetz convenience store, at Hancock Maryland, suffered from limescale and biological growth issues that increased its energy consumption, water usage and maintenance costs. The store utilized chemicals and a water softener in an attempt to combat these problems, to no avail. Grant Gahagan, Project Manager, decided to evaluate if a *HydroFLOW* water conditioning device can remedy the above mentioned issues.

Evaluation method:

- Install a *HydroFLOW* water conditioner on the incoming water supply.
- Bypass the water softener and discontinue the use of chemicals.
- Monitor the water conditioner's effect on the prevention of new limescale and biological accumulation.
- Monitor the water conditioner's effect on the removal of existing limescale and biological deposits.

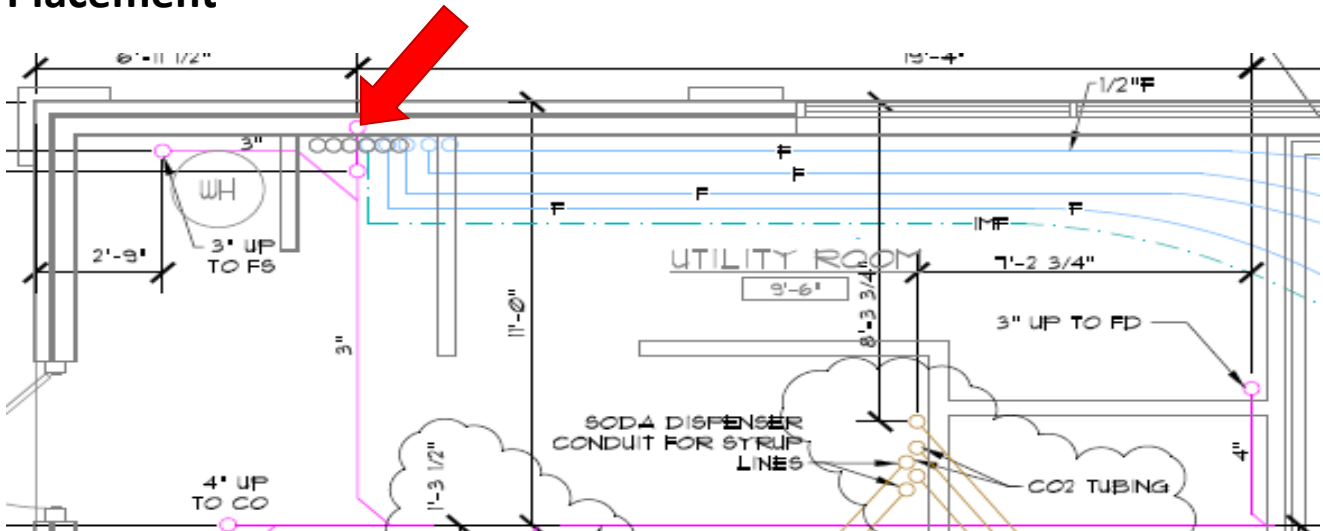
Expected results:

- Immediate results - scale and biological deposits will stop accumulating on water fixtures and equipment.
- Gradual results - scale and biological deposits will be removed from water fixtures and equipment.

Installed *HydroFLOW* 45i



Placement



Results

Before the installation of the *HydroFLOW* device, the store's equipment required weekly maintenance service to remove scale accumulation. Since the installation, minimal service was required.



Before - 7 day accumulation (hard scale)



After - 90 day scale accumulation (soft and brittle scale)



Before - 7 day accumulation



After - 90 day scale accumulation

Summary

- The 90 day evaluation showed *HydroFLOW* water conditioners can remedy the limescale and biological growth problems many Sheetz stores encounter, without the use of chemicals and a water softener.
- In addition to the store at Hancock, two other stores in Pennsylvania were evaluated, with similar results.
- A car wash application was also evaluated with very positive results.
- The Sheetz Corporation intends to gradually replace conventional water treatment methods with *HydroFLOW* water conditioners.

Referral Information

Grant Gahagan - Project Manager

Phone: 814-239-1433

Email: ggahagan@sheetz.com

Website: www.sheetz.com